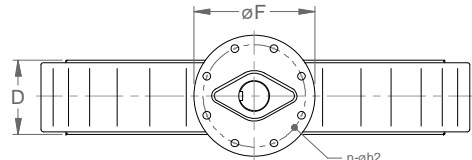
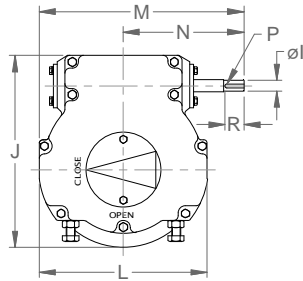


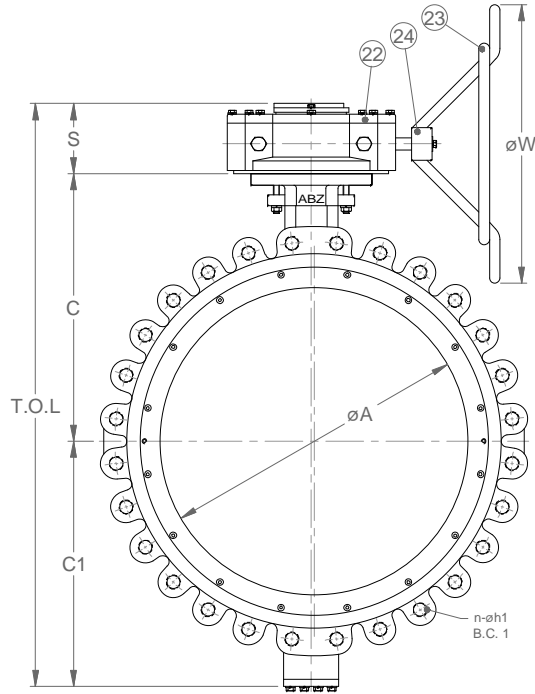
Gear Dimensions													
Valve Size	Operator	Tap Holes	B.C.	R	N	P	øI	J	S	L	M	øW	Weight
26"-28"	66:1	(8) M16 x 25mm (1")	10.00	1.50	14.17	8mm x 8mm	1.00	12.17	5.03	11.57	19.96	25.25	95 lbs
30"-38"	82:1	(8) M16 x 25mm (1")	10.00	1.50	15.75	8mm x 8mm	1.00	15.71	5.63	13.15	22.33	25.25	240 lbs
40"-48"	376:1	(8) M20 x 35mm (1.25")	11.73	1.50	15.25	8mm x 8mm	.90	20.50	6.00	16.75	24.25	25.25	261 lbs



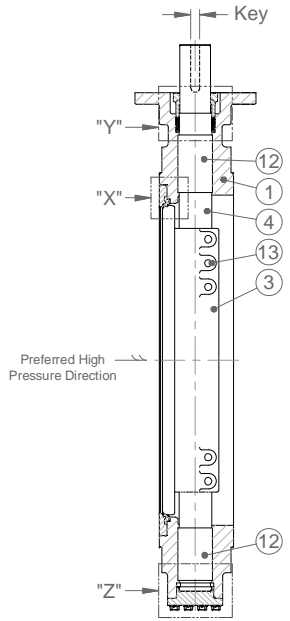
Top View



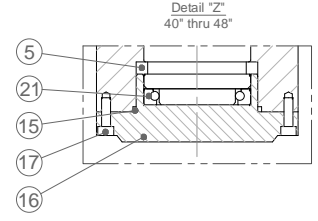
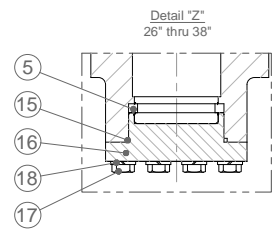
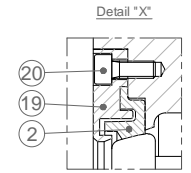
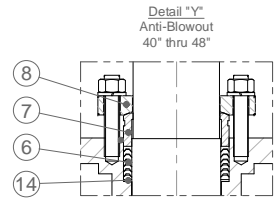
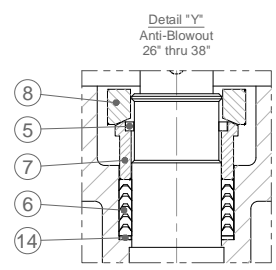
Section View



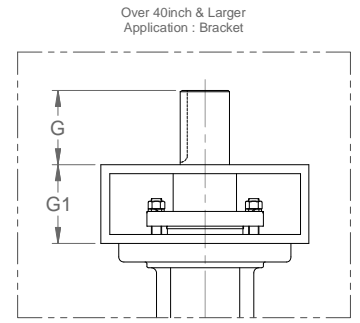
Flow View



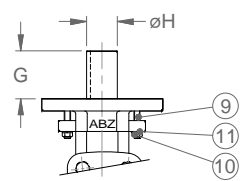
Section View



Parts Schedule			
Item No.	Name	Material	No. Req'd
1	Body	A216-WCB	1
2	Seat Ring	RTFE	1
3	Disc	A351-CF8M	1
4	Stem	A564-630	1
5	Retainer Ring	A276-316	2
6	Packing	PTFE	1 Set
7	Packing Gland	A276-316	1
8	Gland Flange	A351-CF8	1
9	Gland Bolt	Stainless Steel	2
10	Nut	Stainless Steel	2
11	Spring Washer	Stainless Steel	2
12	Bush Bearing	Stainless Steel	2
13	Disc Pin	A276-316	1 Set
14	Packing Retainer	A276-316	1
15	Cap Packing	PTFE	1
16	Cap	A216-WCB	1
17	Cap Bolt	Stainless Steel	1 Set
18	Spring Washer	Stainless Steel	1 Set
19	Seat Retainer	AISI-1020	1
20	Retainer Bolt	Stainless Steel	1 Set
21	Thrust Bearing	ASSY	1 Set
22	Gear	Cast Iron	1
23	Handwheel	Steel	1
24	Key	Steel	1



Valve Dimensions																		
Valve Size		øA	C	C1	D	øF	G	G1	øH	Key	T.O.L.	Valve Weight	Mounting Base	Flange Dimension				
Inch	MM												B.C. 2	n	øh2	B.C. 1	n	øh1
26"	650	23.11	22.24	19.88	6.50	11.42	4.02	-	2.555	.75 x .50	47.15	926 lbs	10.00	8	.75	31.75	24	1 1/4"x8un
28"	700	25.12	23.62	21.26	6.50	11.42	4.02	-	2.555	.75 x .50	49.91	1058 lbs	10.00	8	.75	34.00	28	1 1/4"x8un
30"	750	27.01	25.39	23.03	7.48	12.99	4.45	-	3.146	.87 x .55	54.05	1261 lbs	10.00	8	.75	36.00	28	1 1/4"x8un
32"	800	28.94	26.38	24.21	7.48	12.99	4.45	-	3.146	.87 x .55	56.22	1477 lbs	10.00	8	.75	38.50	28	1 1/2"x8un
34"	850	30.83	27.56	26.18	7.99	12.99	4.45	-	3.146	.87 x .55	59.37	1676 lbs	10.00	8	.75	40.50	32	1 1/2"x8un
36"	900	33.03	28.74	26.38	7.99	12.99	4.45	-	3.146	.87 x .55	60.75	1918 lbs	10.00	8	.75	42.75	32	1 1/2"x8un
38"	950	35.43	29.53	28.35	8.50	12.99	4.45	-	3.146	.87 x .55	63.51	2161 lbs	10.00	8	.75	45.25	32	1 1/2"x8un
40"	1000	36.77	30.12	29.84	8.50	-	4.72	5.91	3.933	1.10 x .63	71.87	2712 lbs	11.73	8	.91	47.25	36	1 1/2"x8un
42"	1050	39.45	30.71	31.10	9.49	-	4.72	6.30	3.933	1.10 x .63	74.11	3329 lbs	11.73	8	.91	49.50	36	1 1/2"x8un
48"	1200	44.37	34.65	35.43	10.00	-	5.31	6.30	4.720	1.26 x .71	82.38	4299 lbs	11.73	8	.91	56.00	44	1 1/2"x8un



- Notes:
- Design : ANSI B16.34 & API 609
  - Gasket Contact Surface : Finish 125-250 AARH
  - Face to Face Dimension : API 609 Category B
  - Flange Connection : ANSI B16.47 Series A Class 150
  - Installation Direction: Bi-Directional / Double Dead End Service
  - Rated for full vacuum in non-preferred direction.

Test Pressure(Psig)	Hydraulic			Air			
	API 598	Shell	450	Seat	325	Seat	-
		<b>Valve Solutions</b> <b>ABZ Valves &amp; Controls</b>					
<b>Title:</b> <b>ABZolute Double Offset Butterfly Valve</b> <b>Series 402 (CL 150) - Trim 100 - Lug Type</b>						Scale: N/A Projection:	
<b>DWG No.</b> <b>26in-48in 402-100-Gear</b>						Unit: <b>inch</b>	
Date	Drawn	Checked	Dimensions are subject to change without notice.			Revision	
07-08-13	BC	Tp				0	