

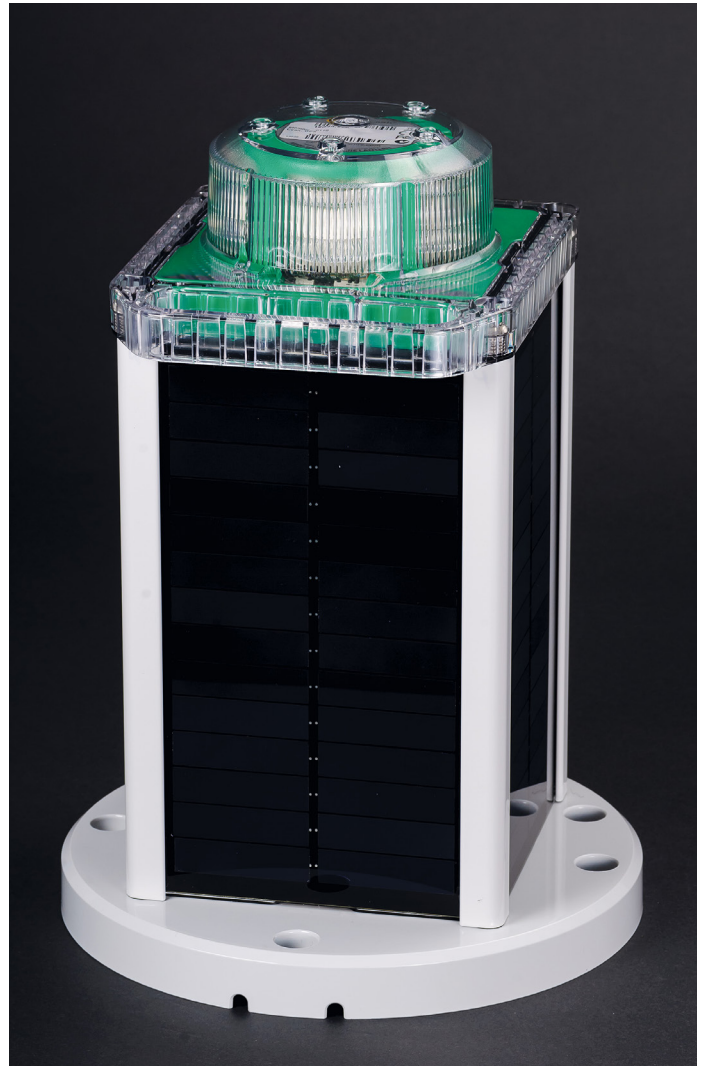


M860

**Self-contained LED lantern
for buoys and beacons
Range 4 to 7 NM**

The M860 is engineered with a durable, large-format solar engine for consistent, reliable performance at remote installations and challenging insolation locations. It is a premium, full-featured lantern that can achieve longer ranges in challenging insolation locations. To view performance at your installation location, visit www.marine.sabik.com and use the Marine Selector Tool

- Options for standard or wide divergences (for fixed or floating applications)
- Multiple cost-effective battery pack options suitable for a wide variety of installation locations
- Built-in calendar function for automatic deactivation during off-season months
- Top-mounted-4-character LED display with simple »tap to activate« functionality
- Premium grade, UV resistant polycarbonate lens material
- Environmentally friendly, super durable power-coated aluminium chassis
- Adjustable intensity and range
- IP68 rated
- GPS synchronized flash option
- Remote monitoring options available



Performance

Product	Vertical divergence @ 50% peak intensity	Peak intensity red	Peak intensity green	Peak intensity yellow	Peak intensity white
M860	8°	239 cd	290 cd	320 cd	445 cd

Electrical specification

Solar modules	High-efficiency cells; MPPT; 4 x 3,8 W
Battery	Battery options: 96 Wh / 6.3 V / 15 Ah capacity 186 Wh / 12 V / 15.5 Ah capacity 200 Wh / 8.4 V / 24 Ah capacity

Product code

Code	Note
M860-cddd-bbb-opt	
c	colour (R, G, Y or W)
ddd	Vertical divergence (08D or 10D)
bbb	Battery capacity (96E, 186LC or 200BC)
opt	Option (GPS, SAT, BLE or CP)

Main technical specification

Lens visual/Mechanical diameter	111 mm
Construction	Premium grade, UV resistant polycarbonate lens/head and polycarbonate/polysiloxane co-polymer base
Light source	High Flux Surface Mount LEDs with colour-specific temperature-corrected LED driver
Degree of ingress protection	IP68
Installation	3, 4 or 5x M12 on 200 mm dia.
Birt deterrent	Stainless steel
Interface	4-digit display

Product code example: M860-R08D-200BC-GPS-CP

- **M860-R08D** is Sabik code for M860 with 8° vertical subtense in red
- **200BC** is a selection of the 200 Wh battery option
- **GPS** is a selection of GPS synchronization
- **CP** is a selection of external charge port

Options

GPS	GPS synchronization
SAT	Satellite monitoring
BLE	Bluetooth control
CP	External charge port

Dimensions

Product	Product dimensions (DxH) mm	Product weight kg	Packing dimensions (DxWxH) mm	Gross weight kg	Product dimensions (DxH) inch	Product weight lb	Packing dimensions (DxWxH) inch	Gross weight lb
M860-cddd-96E	235x328	6.4	330x330x432	8.2	9.25x12.91	14.11	13x13x17	18
M860-cddd-186LC	235x328	9.5	330x330x432	11.1	9.25x12.91	20.94	13x13x17	24
M860-cddd-200BC	235x328	10.2	330x330x432	11.8	9.25x12.91	22.49	13x17x13	26

